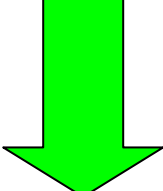
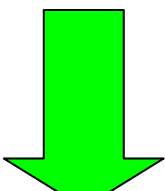
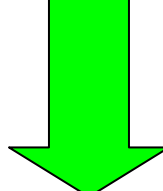


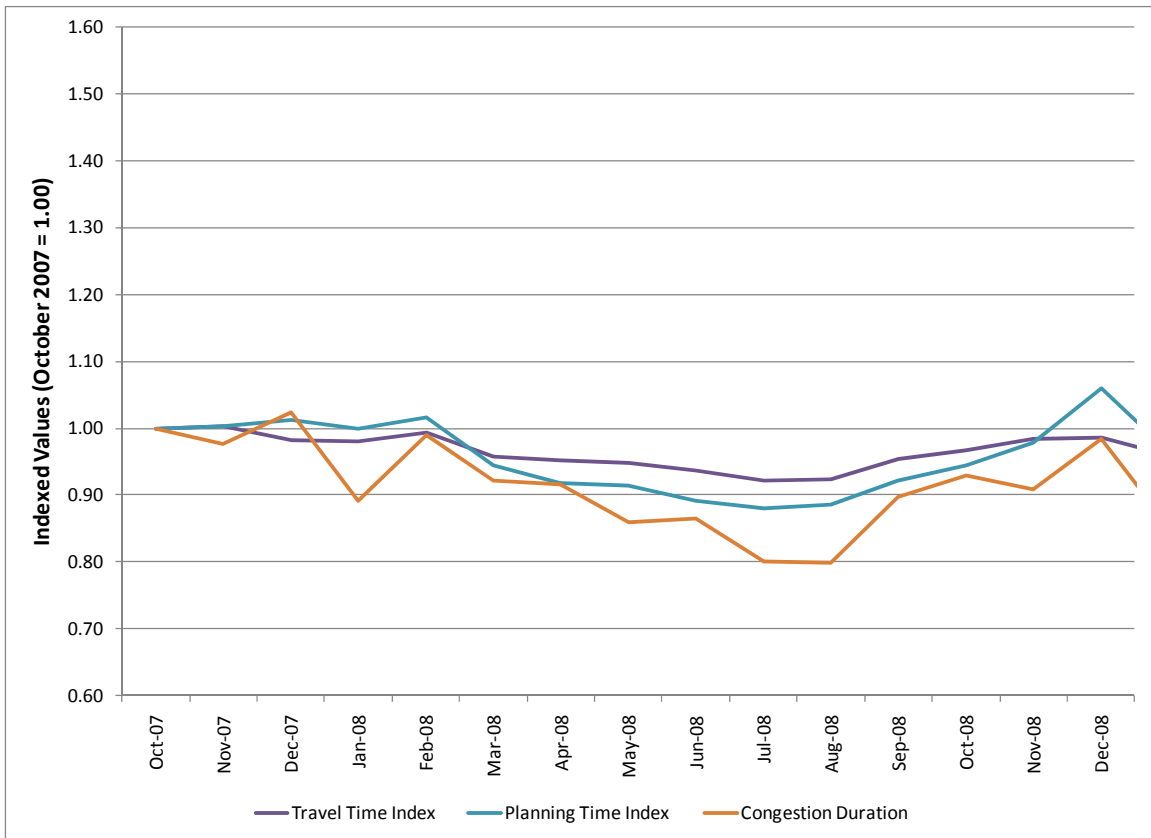
# URBAN CONGESTION REPORT (UCR)

NATIONWIDE FOR OCTOBER – DECEMBER 2008



<b>Congested Hours</b> <i>Average daily travel under congested conditions</i>	<b>Travel Time Index</b> <i>Peak Period vs. Non-Peak</i>	<b>Planning Time Index</b> <i>Reliability of Travel</i>
 <p><b>-23 mins.</b> <b>(4:57)</b></p>	 <p><b>-2%</b> <b>(1.24)</b></p>	 <p><b>-2%</b> <b>(1.59)</b></p>
<p><b>In 2007: 5:20</b></p>	<p><b>In 2007 - 1.26</b></p>	<p><b>In 2007 - 1.61</b></p>

**SUMMARY:** For the three-month period ending in December 2008, all three primary measures showed slight improvements over the same three months in 2007. Thirteen of the 21 cities showed improvements in all three measures. Three cities showed declines in all three measures, and the remaining five cities were stable or had mixed results.



[UCR Measures for 23 Urban Areas can be found on Page 2 →](#)

# URBAN CONGESTION REPORT (UCR)

URBAN AREAS FOR OCTOBER – DECEMBER 2008



Urban Area	Congested Hours		Travel Time Index		Planning Time Index		VMT Served - %change	% Usable Data
	2008	Change (2007)	2008	%Change (2007)	2008	%Change (2007)		
Atlanta, GA	5:36	-1:19	1.21	-8%	1.57	-17%	-2%	58%
Boston, MA	5:09	-0:15	1.26	-4%	1.72	-2%	-2%	95%
Chicago, IL	10:01	+0:06	1.37	-4%	1.92	+3%	-2%	94%
Detroit, MI	5:24	-2:43	1.08	-3%	1.30	-6%	-33%	73%
Houston, TX	5:21	+0:35	1.37	6%	1.84	+15%	-5%	88%
Minneapolis-St. Paul, MN	4:38	+0:29	1.23	1%	1.72	+14%	0%	99%
Oklahoma City, OK	1:18	-1:14	1.05	1%	1.15	0%	8%	100%
Orange County, CA	4:24	+0:24	1.24	2%	1.56	+6%	-2%	100%
Los Angeles, CA	6:30	-0:26	1.32	-2%	1.70	-1%	1%	100%
Philadelphia, PA	5:01	-0:33	1.19	-4%	1.51	-7%	4%	83%
Phoenix, AZ	2:54	-1:59	1.19	-9%	1.47	-22%	-2%	100%
Pittsburgh, PA	6:17	-1:26	1.20	-4%	1.46	-9%	-1%	91%
Portland, OR	2:18	-0:42	1.32	-3%	1.93	+5%	-6%	32%
Providence, RI	2:48	-0:45	1.10	-3%	1.35	-4%	1%	100%
Riverside – San Bernardino, CA	2:42	-0:59	1.10	-5%	1.28	-10%	-1%	100%
Sacramento, CA	n.a.	n.a.	n.a.	n.a.	n.a.	n.a.	n.a.	n.a.
St. Louis, MO	2:29	-0:50	1.08	-4%	1.29	-8%	3%	99%
Salt Lake City, UT	n.a.	n.a.	n.a.	n.a.	n.a.	n.a.	n.a.	n.a.
San Antonio, TX	5:36	+1:22	1.13	-4%	1.33	-17%	3%	86%
San Diego, CA	2:08	-0:58	1.10	-6%	1.29	-13%	0%	100%
San Francisco, CA	3:21	-1:08	1.17	-2%	1.38	-8%	-4%	94%
Seattle, WA	5:52	-1:20	1.35	-9%	1.82	-14%	-5%	100%
Tampa, FL	3:27	+0:43	1.11	0%	1.27	-1%	-3%	99%

*For more information on the UCR, contact Rich Taylor (Rich.Taylor@dot.gov).*